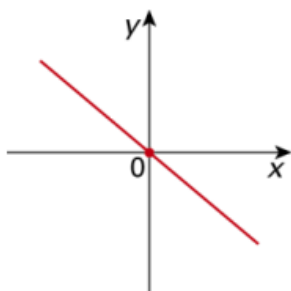


Funções: afim, linear e constante

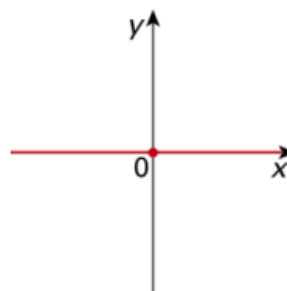


1. Qual dos gráficos seguintes cartesianos **não** representa uma função linear?
Escolhe a opção correta.

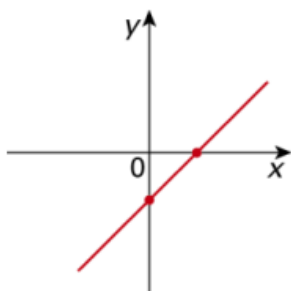
(A)



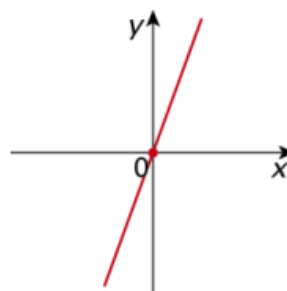
(B)



(C)

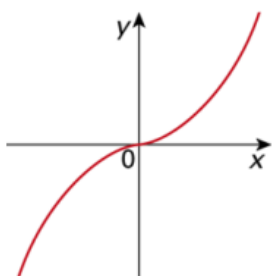


(D)

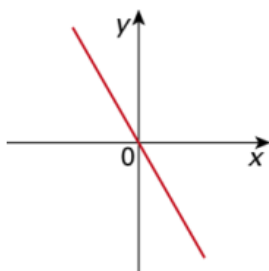


2. Qual dos gráficos seguintes representa uma função linear?
Justifica a tua resposta.

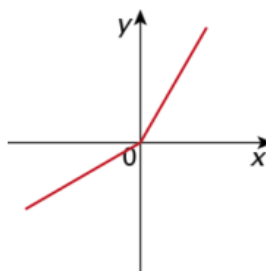
(A)



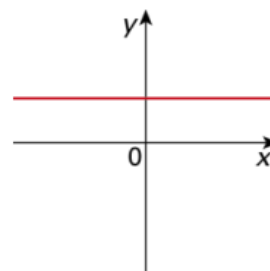
(B)



(C)



(D)

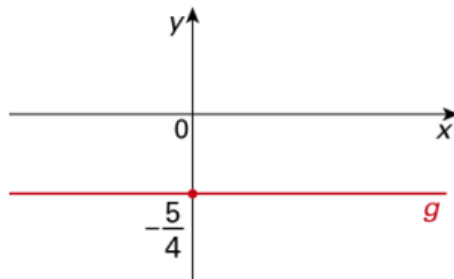


3. Considera a função afim f , definida de \mathbb{Q} em \mathbb{Q} , por $f(x) = \frac{4x - 20}{16}$.

3.1. Calcula: a) $f(5)$ b) $f(1)$

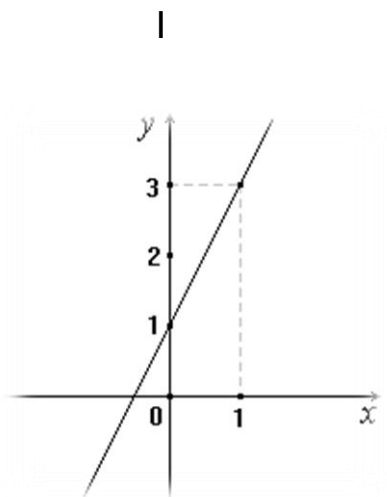
3.2. Escreve f na forma canónica e determina os respetivos coeficiente e termo independente.

3.3. Considera a função g , definida de \mathbb{Q} em \mathbb{Q} , pelo gráfico cartesiano seguinte.



Define a função h de modo que $f(x) = h(x) + g(x)$.

4. Indica a designação de cada uma das funções a seguir representadas e associa-lhe a respetiva expressão algébrica.



$$f(x) = -0,5x$$

$$g(x) = 2x + 1$$

$$h(x) = -x + 5$$

